

Become an agile and international company!  
成为敏捷化的国际性公司!

**浙江日发纺织机械股份有限公司**  
ZHEJIANG RIFA TEXTILE MACHINERY CO.,LTD.

Add: No.88 Woxi Avenue, Meizhu Industrial Zone,  
Xinchang, Shaoxing, Zhejiang, China (312500)  
地址: 浙江省绍兴市新昌县梅渚工业区沃西大道88号

**安徽日发纺织机械有限公司**  
ANHUI RIFA TEXTILE MACHINERY CO.,LTD.

Add: No. 1755, Changzhou Road (South), Industrial  
Transfer Demonstration Region, Dangtu town, Ma'anshan  
city, Anhui province, China (243000)

地址: 马鞍山承接产业转移示范园区常州南路1755号  
电话(Tel): 400-999-8008 / 86-555-6680873  
传真(Fax): 86-555-6680863  
www.rifatm.com



本样本仅供参考, 不作为技术验收的依据。  
为提高产品质量, 本公司保留更改规格之权力, 恕不另行通知。  
This sample is used for reference only and is not serving as a basis for technical acceptance.  
For the purpose of improving product quality, our company reserves the right to change product specifications without notice.



## SPINNING Solutions

### 纺纱解决方案

RFRS30D 转杯纺纱机

RFRS30D ROTOR SPINNING MACHINERY



## 关于日发纺机

日发纺机创建于1993年，是国家重点高新技术企业、国家机械工业重点骨干企业、国家863计划CIMS工程示范企业、全国CAD应用工程示范企业、中国纺织机械协会副会长单位。现旗下控股山东日发纺织机械有限公司、安徽日发纺织机械有限公司、浙江日发纺机技术有限公司。

公司以“成为敏捷化的国际性公司”为愿景，以“为用户提供智能纺织装备系统解决方案，并协助用户逐步实现数字化工厂梦想”为使命，秉承“质量、创新、快速反应”的核心价值观，致力于机电行业的“数字科技”，已成为国内外享有高知名度的纺织装备生产企业。多年来已成功开发了清梳联、并条机、转杯纺纱机、喷气涡流纺纱机、倍捻机、直捻机、假捻变形机、精密并纱（络筒）机、自动穿经机、喷气织机、喷水织机、剑杆织机、毛巾织机、特种织机、针织圆机、无缝内衣机、袜机、非织造布设备等系列的上百种产品，能够为行业提供纺纱、前准备、织造、非织造等解决方案，涉及纺织行业的各个领域。产品遍及全国各地，并销往全球30多个国家和地区，在各个行业的市场占有率位居前列。



日发纺机正致力于创造崭新的“数字科技”理念，在未来的整机生产中，建立“人流、物流、信息流”的互动平台，实现科技、环境、制造的和谐统一。铸就“信息化、敏捷化、国际化”的机械制造生产基地。

安徽日发纺织机械有限公司系日发纺机全资子公司，注册成立于2013年，位于马鞍山承接产业转移示范园区内。公司主要产品为清梳联、并条机、转杯纺纱机、针刺、水刺非织造布设备，继承日发纺机三十多年的专业经验使安徽日发纺机成长为高端纺纱装备研发制造基地。

## About Us

Zhejiang Rifa textile machinery co., ltd. is founded in 1993. The company is a China national key high-tech enterprises, a key enterprise of the China national machinery industry, a demonstration enterprise of both China national 863 program CIMS engineering and China national CAD application engineering, a China national torch plan high-tech enterprise, and a vice president unit of China textile machinery association. It now holds three subsidiaries: Shandong Rifa textile machinery co., ltd., Anhui Rifa textile machinery co., ltd. And Zhejiang Rifa textile machinery tech co., ltd.

With the vision of “become an agile and international company”, the mission of “Provide users with intelligent textile equipment system solutions, and help users gradually realize the dream of a digital factory” and the core values of “quality, innovation and rapid response”, Zhejiang Rifa Textile Machinery Co., Ltd. is devoted to the area of “digital technology” in mechanical and electrical industry, and has become a well-known textile equipment manufacturer with excellent reputation at home and abroad. Over the years, the company has successfully developed four solutions such as spinning, fiber preparation, weaving and non-woven, including blow-room machine, draw frame, rotor spinning machine, air jet vortex spinning machine, two-for-one twister machine, twister machine for tire cord, false-twist texturing machine, precise winding machine (precise rewinding machine), automatic warp drawing machine, air jet loom, water jet loom, rapier loom, terry towel loom, specific loom, circular knitting machine, seamless knitting machine, hosiery machine and non-woven equipment, and hundreds of machines. These products have been distributed to all areas around China and sold to more than 30 foreign countries and regions with a leading market share in each respective industry.

RIFA is devoting itself to create a whole new theory of digital technology, establishing an interactive platform of “people flow, material flow and information flow”, realizing harmony and unify of science and technology, environment and manufacturing, and aiming to become a manufacturing base of “informatization, agility and internationalization”.

Anhui Rifa Textile Machinery Co., Ltd. is a wholly owned subsidiary of Zhejiang Rifa Textile Machinery Co., Ltd., it is founded in 2013, located in Ma'anshan City. The leading products are blow-room machine, draw frame, rotor spinning machine, needle&spunlace non-woven equipment: succeeding above 30 year professional experience from zhejiang Rifa, anhui Rifa has grown to a top grade spinning research and manufacturing base.





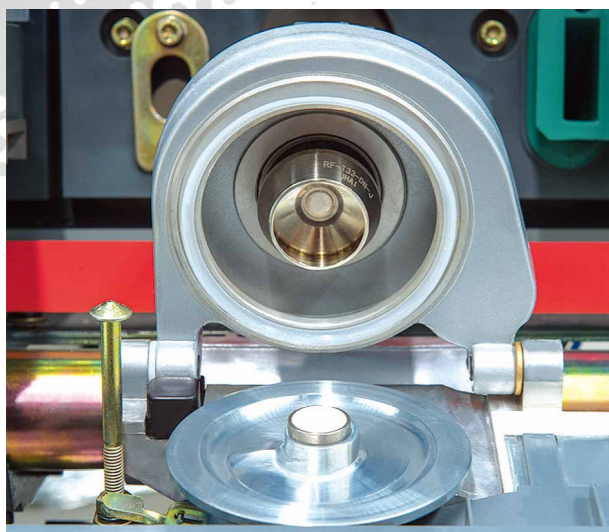
日发纺机自2002年推出第一代转杯纺纱机RFRS10, 累计销售超过1000000锭, 客户家数超过1000家。不断累积的工艺数据与对纺纱技术的研究, 我们洞悉行业的发展趋势与客户需求, 推出节能、高效、智能的全新一代转杯纺机RFRS30D, 它具有:

- 头数可达600锭, 转杯设计理论速度为110000RPM
- 模块化设计与丰富的可选配件, 满足不同客户的需求
- 可配置创新型的落纱小车, 使生产效率大幅提高
- 更多电子技术的应用, 使设备更智能与高效

Since the first generation of rotor spinning machines was launched in 2002, the cumulative sales have exceeded 1,000,000 spindles, and the number of users has exceeded 1,000. Continuous accumulation of process data and research on spinning technology, we understand the development trend of the industry and customer needs thoroughly, introducing the new generation of rotor spinning machine RFRS30D with energy saving, high efficiency and intelligence, It has:

- Max spindles is up to 600 spindles, and the highest rotor design speed of 110,000RPM.
- Modular design and abundant optional accessories to meet the needs of different customers.
- Innovative auto doffing device can be as option, which increase production efficiency greatly.
- More electronic technology applications make machine smarter and more efficient.

转杯纺纱机  
ROTOR SPINNING MACHINE

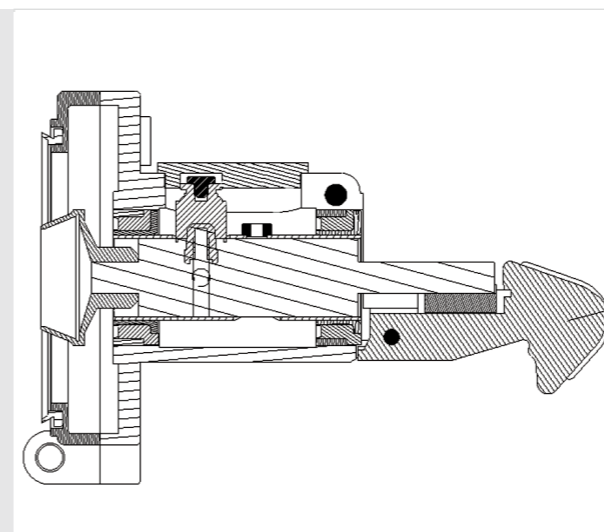


纺纱器 — 转杯纺的心脏

充分实验数据的采集与分析,对纺纱器通道进行优化,使适纺性与成纱质量达到完美结合。获得专利排杂系统,适应更广的原料,使客户从容面对市场变化,并减少工人劳动强度。通道口镶嵌高强度陶瓷,减少纤维对腔体的磨损,延长使用寿命。

Spinner — Heart of The Rotor Spinning Machine

It fully collects and analyzes the experimental data, optimizes the channel of spinner to realize a perfect combination between optimal spinning and yarn quality; With the patent trash-removal system and it can process more raw materials of different kinds, making the customers face the market changes at a leisurely pace and reducing the labor intensity of workers; The opening of channel is covered with ceramics of high strength, reducing the wear-and-tear of fiber to cavity and prolonging the service life.

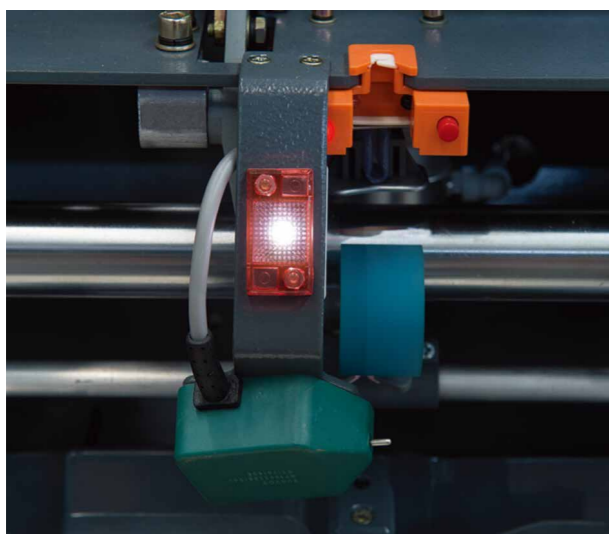


转杯轴承免拆装装置

该装置大大降低保全工的劳动强度,保证隔距稳定性,提高了产品一致性。

Rotor Bearing Free Disassembly Device

The device greatly reduces the labor intensity of the maintenance work, ensures the grid distance stability, and improves product consistency.



优易接头系统 — 高速纺纱的保证

标配气动抬升装置,断头响应时间仅为0.1秒;经过上百万次试验,可靠性高。独有的接头系统,接头时皮辊先于卷绕辊引纱,避免纱筒大小对于接头质量的影响。专有的接头数学模型与步进罗拉给棉,精确控制给棉量与给棉时间,保证接头强力与形态。

Optimal Joint System — The Promise Of High-Speed Spinning

The standard pneumatic lifting device whose breaking response is 0.1 sec only; millions of experiments have proved it has high reliability. With the unique joint system, the roller is prior to the winding roller to guide the yarn when jointing to avoid the influence of bobbin to the quality of the joint. The exclusive mathematic jointing mode and stepping roller feeding accurately control the feeding volume and time to ensure the strength and shape of joint.



集体生头系统

该系统主要用于正常停机或者非正常电网断电停机情况的自动生头,可以减少整机接头时间,降低挡车工劳动强度。

Synchro Piecing

The system is mainly used for automatic joint of normal shutdown or abnormal grid power failure, which can reduce the piecing time of the whole machine, reduce the labor intensity of the worker.



自动落纱小车 — 智能化的开端

开启半自动机器人模式,实现不断头自动落筒,降低劳动强度。高效性。从定位到落筒,完成一个标准落筒工作时间在20s以内。智能化,可以实现自动和手动模式落纱。

Color Change of Whole Machine

Beginning of intelligent, it starts the mode of semiautomatic machine to instead of labor work, to realize automatic doffing with no break ends, to reduce labor intensity. High efficiency, from fixed position to doffing, one standard doffing working time is within 20s. Intelligent, can realize automatic and manual mode of doffing.

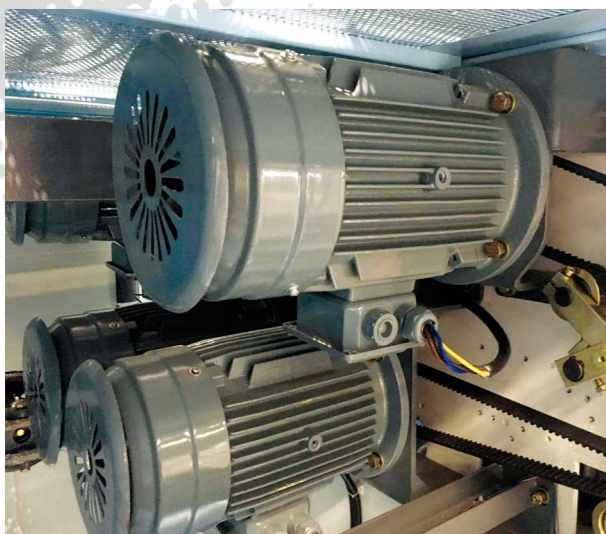


健康互联网系统

客户主机程序可进行在线升级、可对客户主要传动部件进行在线监测与预警、客户可在全球各地实时了解自己设备的实际运行情况。

Health Internet System

Program of machine can be upgraded online, online monitoring and early warning of th main transmission components, and user can know the actual operation of equipment in real time around the world.



电子张力系统

采用数码控制,可以减少复杂的机械调节工作,客户可直接在车头显示屏上进行张力系数调节,调节精度可达0.001,保障了纱锭成型稳定。

Electronic Tension System

The digital control can reduce the complicated mechanical adjustment work. The user can directly adjust the tension coefficient in the monitor of headstock, and the adjustment precision can reach 0.001, which ensures the stable forming for winding package.



全车色系改变

色系全部由意大利公司设计,色系相比现在将更加丰富与层次感,也会为客户带来全新的视觉冲击。

Color Change of Whole Machine

The color of machine was completely by the Italian company. The color will be plentiful and more layered than now, and it will bring new visual impact to user.

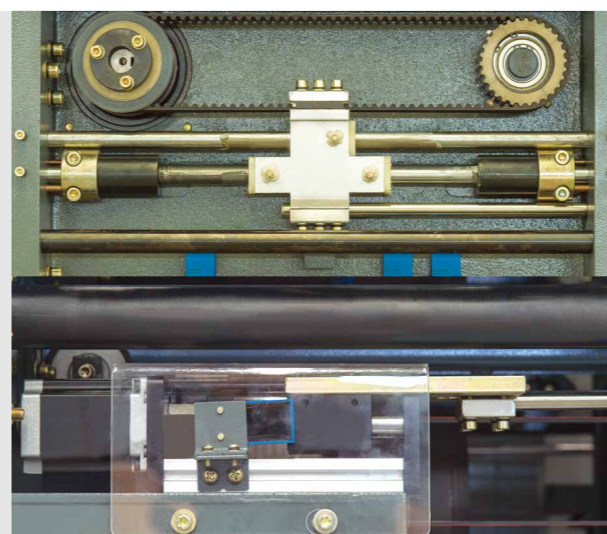


正压散热系统

该系统可以减少飞花、粉尘在车头车尾内腔聚集,降低保全工的劳动强度,改善了电气元件的散热条件,从而增加了机台运行的稳定性,降低了能耗。

Barotropic Cooling System

The system can reduce the accumulation of flying and dust in the inner cavity of headstock and tail box, reduce the labor intensity of maintenance workers, improve the heat cooling condition of electrical components, and thereby increase the operation stability and reduce energy consumption.

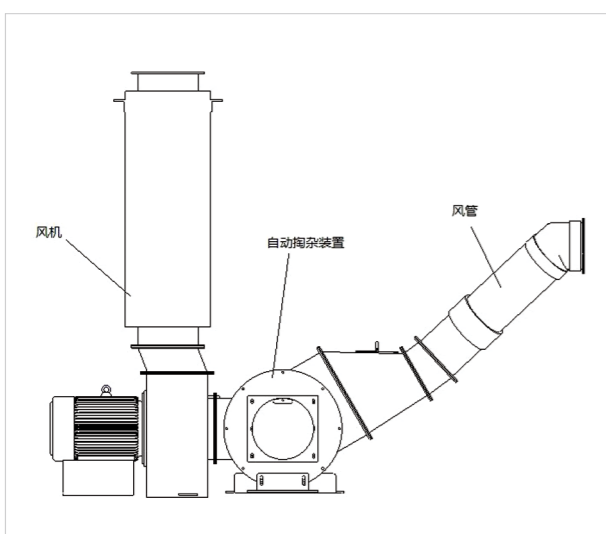


细节优化——所求完美

- 伺服驱动横动导纱,引纱速度达到200米/分。
- 步进驱动微动机构,减少纱线对皮辑的磨损。
- 优化的机架,减少操作高度,可配最高1200毫米的条筒。
- 全机变频驱动,节能降耗;两侧独立传动,减少生产辅助时间。

Optimize The Details To Be Perfect

- Servo drives transverse yarn guiding and the delivery speed can reach up to 200 m/min;
- The stepping micro-drive organs reduce the wear-and-tear of yarn to the roller;
- The optimized machine frame reduces the operating height and can be equipped with the can of 1200mm at most;
- The whole machine is driven with converse frequency, reserving the energy and reducing consumption; The two sides are transmitted independently which decreases the production assistance time of production.



自动掏杂系统

该系统将减少挡车工的劳动强度,同时也为机台提供一个更加稳定的负压环境,使纱线的生产更加稳定,提高了纱线质量的一致性。

Automatic Take Out Impurity System

The system will reduce the labor intensity of the operator, and also provide a more stable negative pressure environment for the machine, which makes spinning production more stable and improves the consistency of the yarn quality.



全球采购——品质保证

与知名供应商开展战略合作,专件全球采购,保证设备品质,完善的品管系统,确保产品质量。

Global Sourcing to Guarantee Quality

We carry out strategic cooperation with well-known suppliers, with special components purchased via global sourcing to ensure equipment quality. Perfect and sound quality management system ensures product quality.

